



ploiești



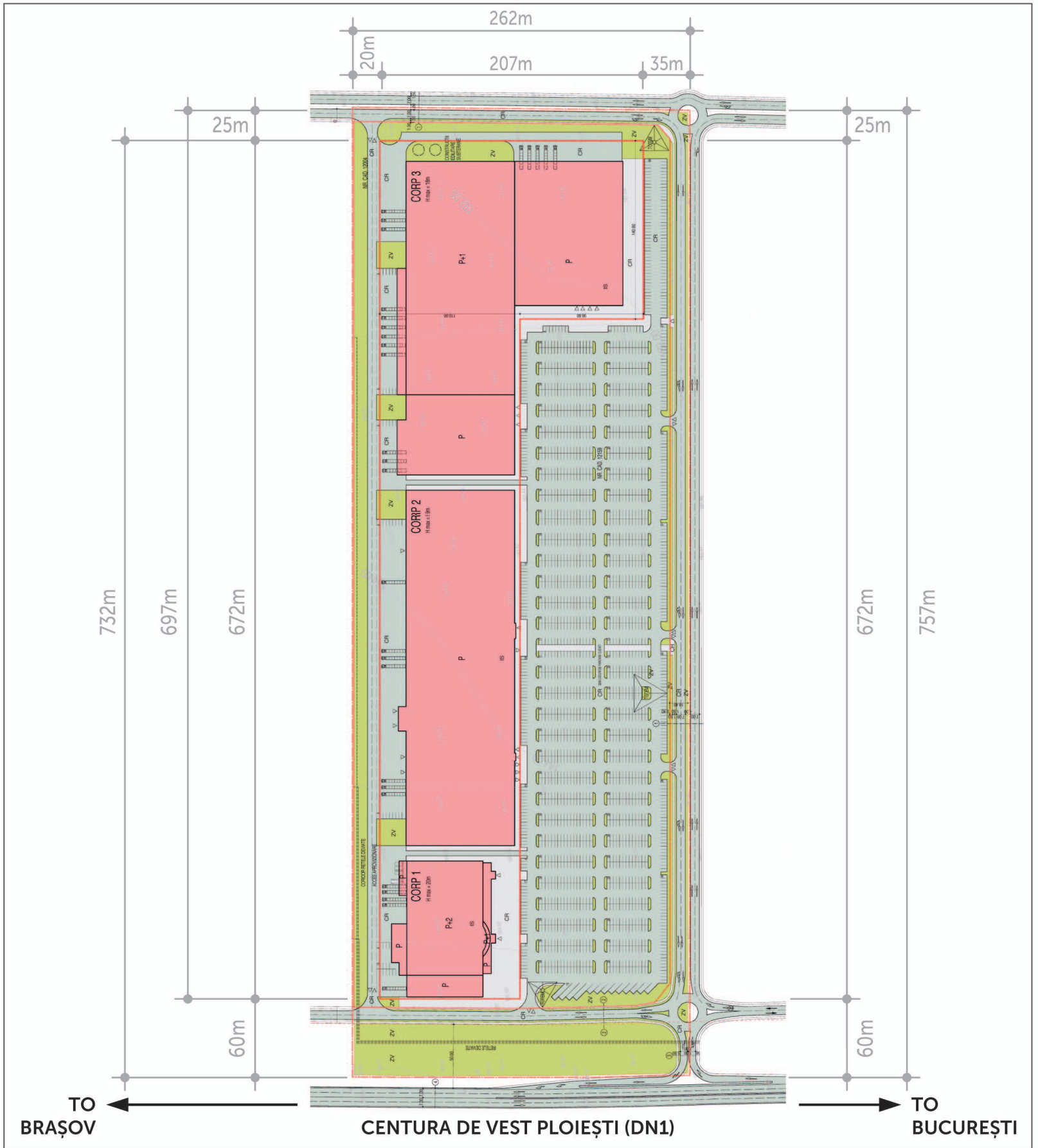
The City of Ploiesti

- Located in the south of Romania;
- 45 km away from Bucharest;
- 40 km away from the International Airport "Henri Coanda" located in Bucharest;
- Ploiesti, is so called "The black gold capital" due to the oil deposits discovered near the city, Ploiesti being one of the biggest oil producers in Romania.

FGG Immobilien Site Location



Commercial Project in the City of Ploiești



Project description

- A proposed commercial development consisting of 3 buildings;
- Easy and comfortable access solution to the project, direct from the western ring road (DN 1), and also from the city main roads;
- Proximity to existing retail;
- Proximity to existing residential areas;
- Land plot of 196.864 sqm;
- Commercial buildings – 89.407 sqm;
- Parking areas - 2240.

Plot Details

Plot Surface:	196.864 sqm
Opening to National Road	273m
Distance to Highway	1000m
Distance to city	1000m

Project Location

City of Ploiești



Project location

- In the western part of the city on the western ring road (National Road No 1 / DN 1);
- Direct exit to the Ploiesti western ring road, with easy access to the all important directions: Ploiesti City Center, Bucharest, International Airport, Brasov, Buzău;
- Distance to the city 1000m;
- Distance to the highway Bucharest – Ploiesti – Brasov: 1000 m.

Distances and Population

Ploiești-București		45km
Ploiești-Henri Coandă International Airport		40km
Ploiești-București (Highway)		62km
	city	county
Ploiești	280000	890000
București	2 mil	2,5 mil



fgg immobilien

Decebal Boulevard no 2
2nd Floor, Room. 207
RO – 310133 Arad, Romania
Tel./Fax: 0040 (0) 257 210 027
Mobile: 0040 (0) 726 197 915